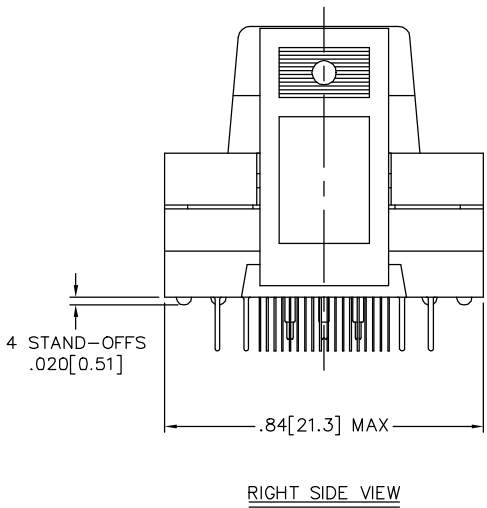
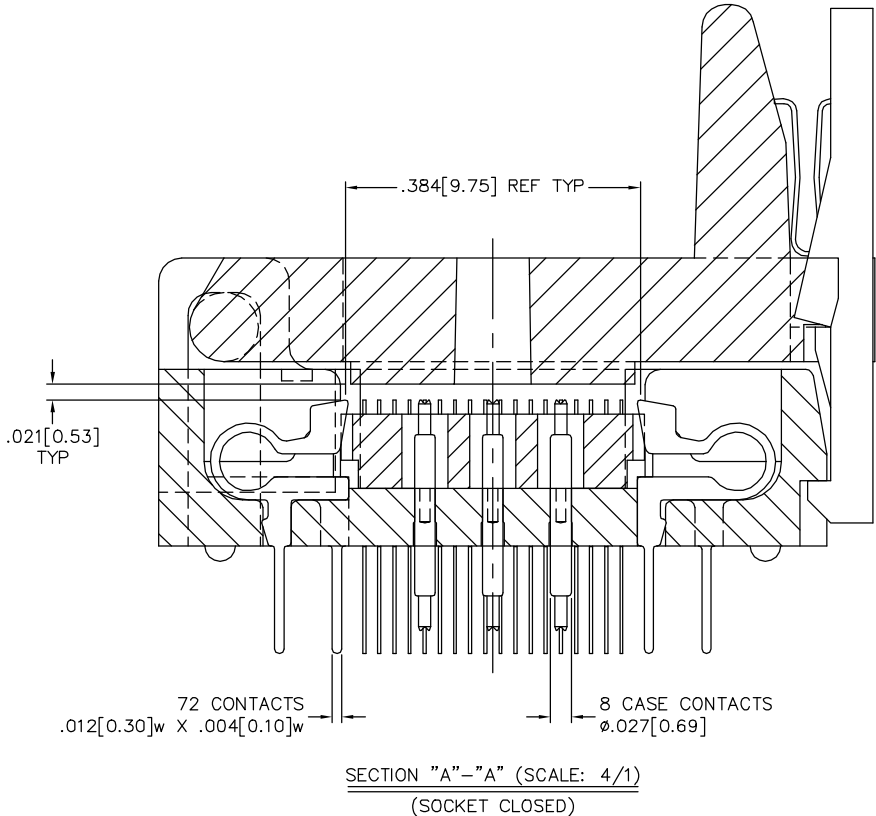
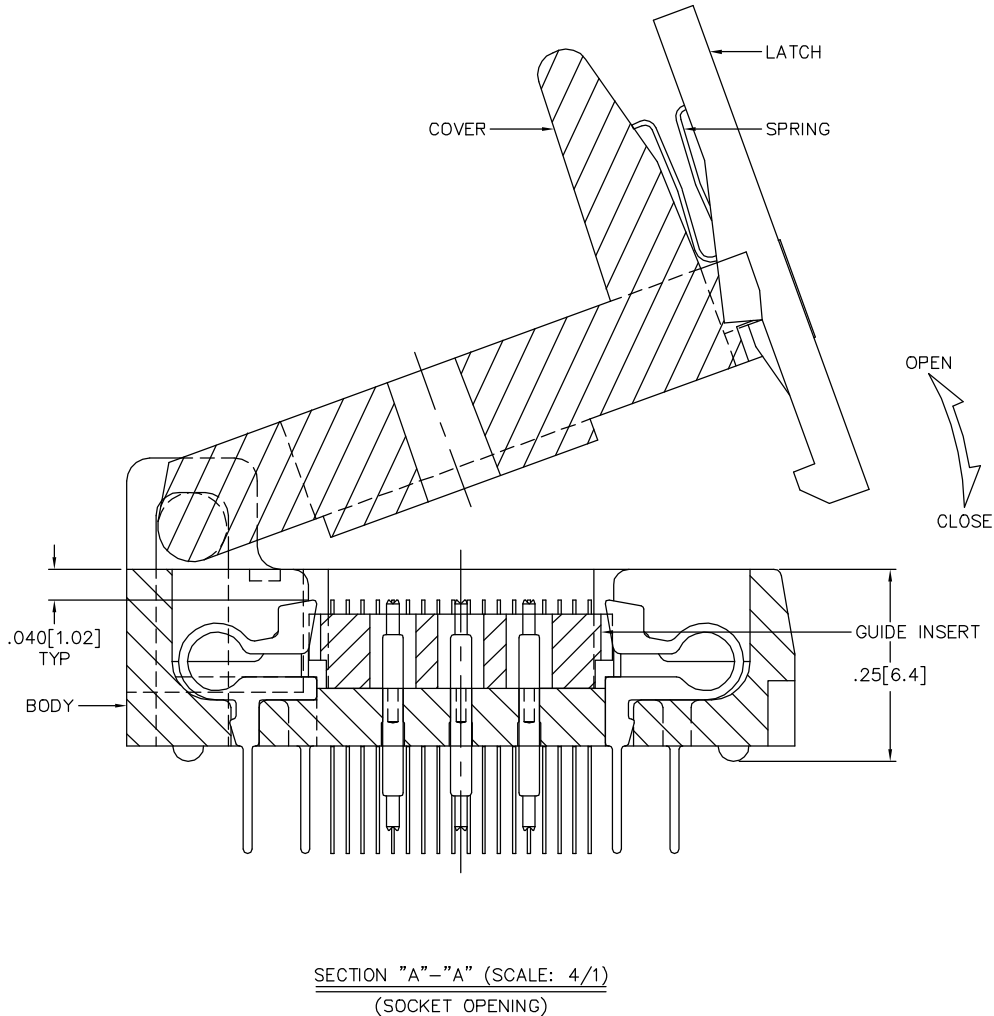
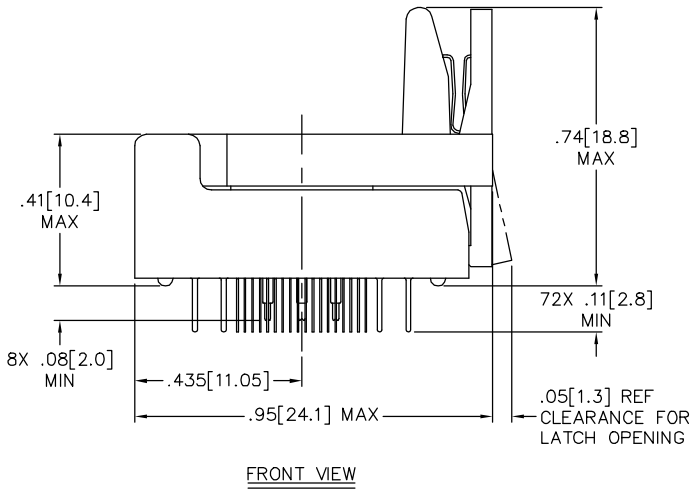
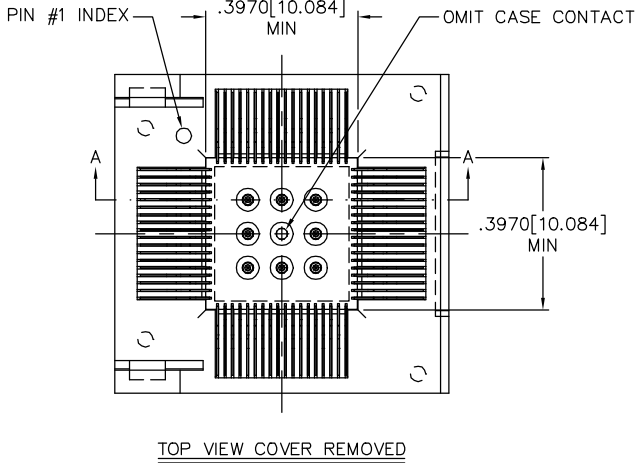
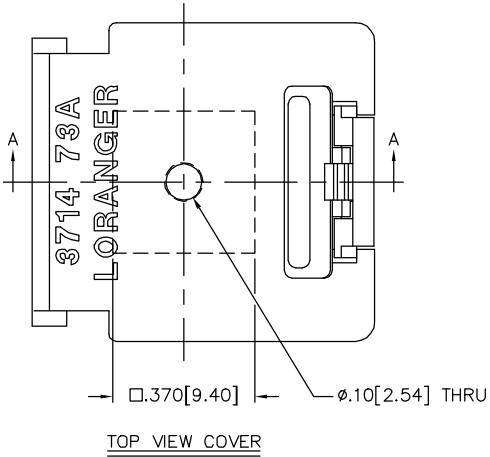


REVISION		
symbol	description	initial/date
*	ADDED GUIDE INSERT	JFN/02-28-05



• CONTROLLING DIMENSIONS : INCH



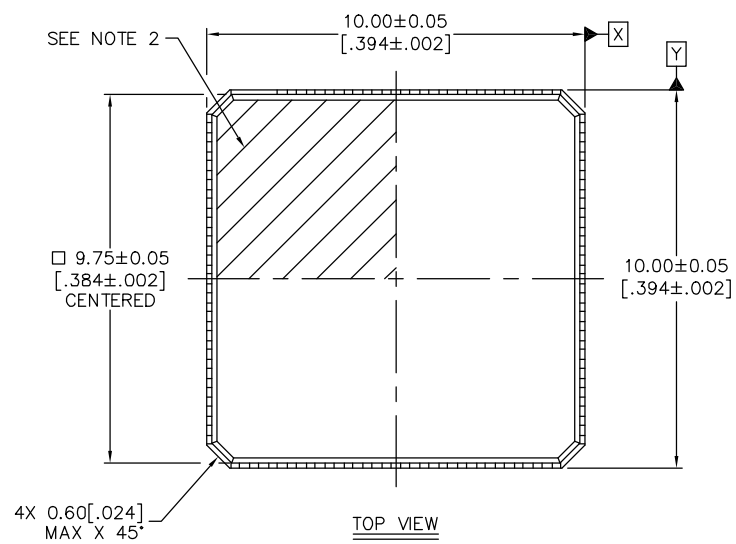
Tolerance In Inches
 .xx±.01 fract.
 .xxx±.005 ang.±1/2°
 .xxxx±.0010

SCALE
2/1

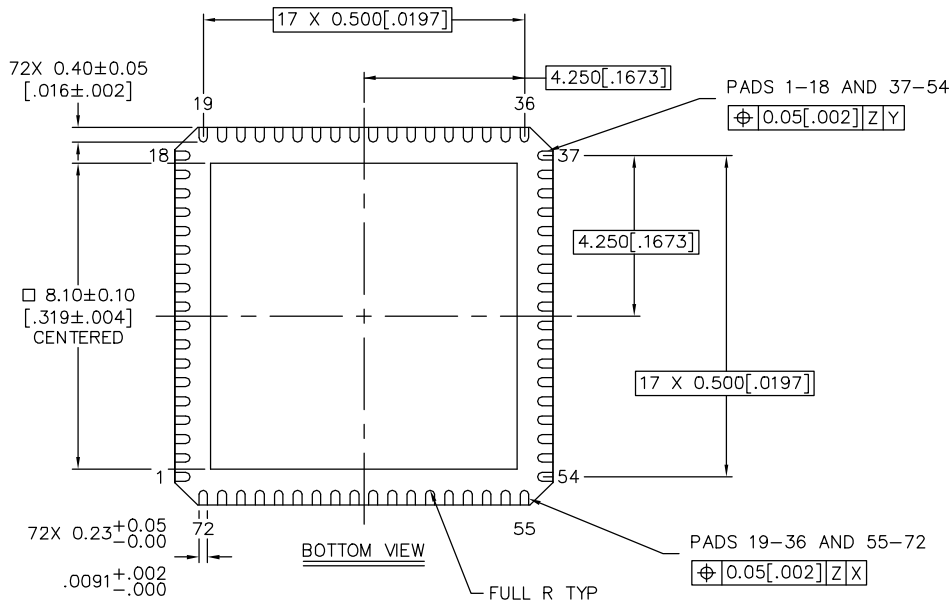
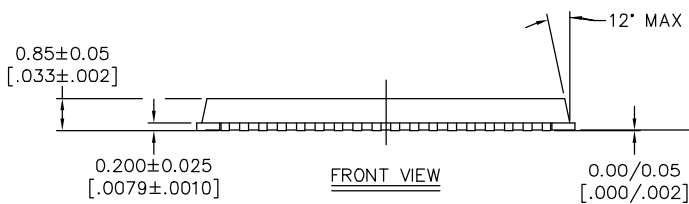
Orig. Release

NOTICE Drawing is subject to change without notice and is L.I.C. proprietary in design and content. L.I.C. retains all patent rights and exclusive rights of use, manufacture and/or sale. Possession of this drawing does not convey permission to reproduce or manufacture article. Permission shall only be granted in writing and must be signed by an officer of L.I.C.				
Equipment where used	73 LEAD .394[10.00] SQ .0197[0.500] PITCH QFN	PROD. NO.03714 731 X218A		
Part Description	SOCKET ASSEMBLY	DWG. NO.03714 731 X218A		
DRAFTED by/date	JFN/06-05-03	CHECKED by/date	ISSUE DATE	PAGE NO. 1 OF 2

DIMENSIONALLY COMPATIBLE PACKAGE FOR SOCKET SHOWN ON PAGE 1



- CONTROLLING DIMENSIONS : mm
- SCALE: 5/1



NOTES:

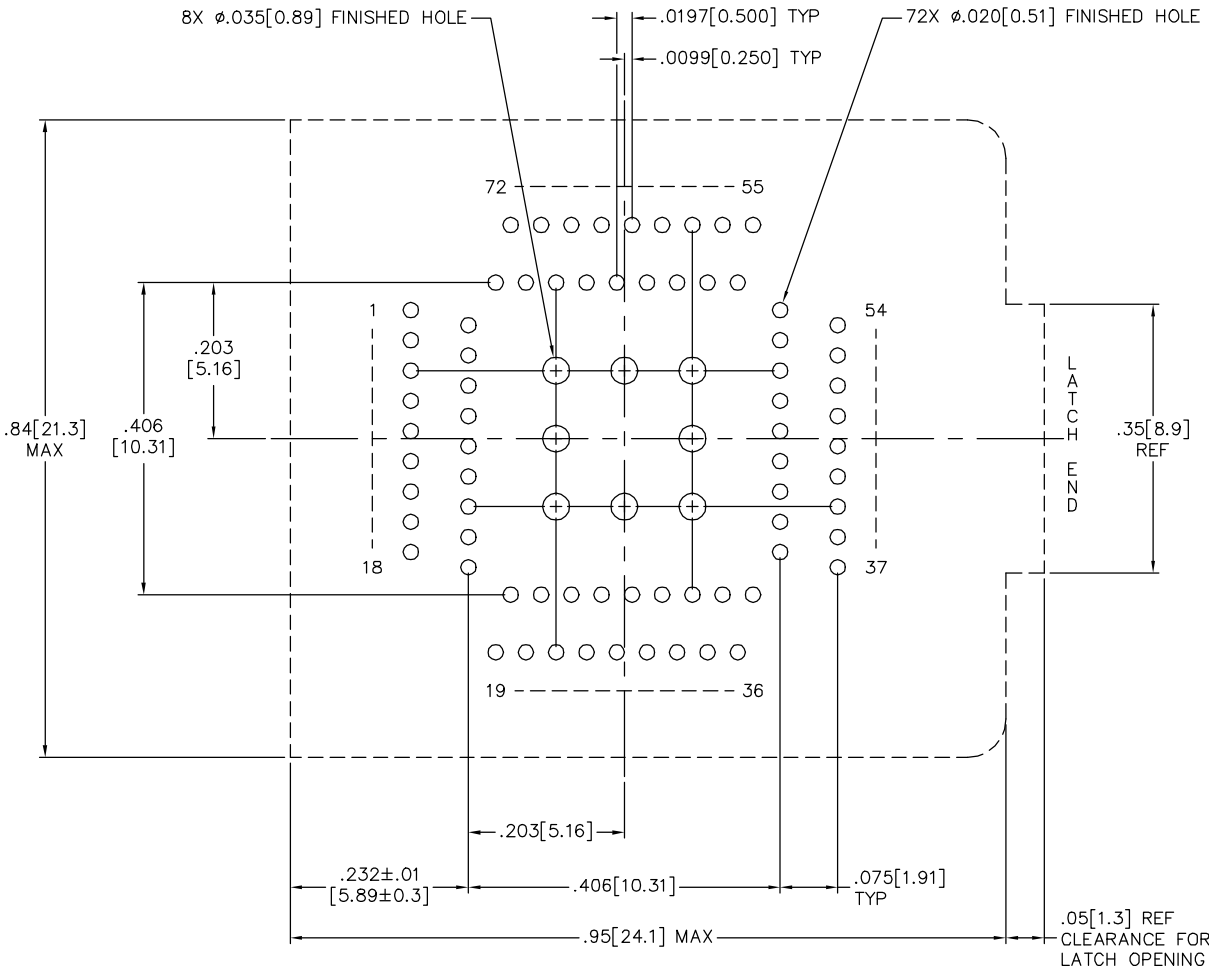
- INTERPRET DRAWING IN ACCORDANCE WITH ASME Y14.5M-1994
- A PIN 1 CORNER IDENTIFYING FEATURE IS RECOMMENDED TO BE APPLIED IN THE GENERAL AREA SHOWN. SIZE, STYLE AND LOCATION OPTIONAL, BUT THE FEATURE MUST NOT PROJECT ABOVE THE PACKAGE TOP.
- THIS DEVICE PACKAGE IS BASED, IN PART, ON INFORMATION CONTAINED IN CUSTOMER-SUPPLIED DRAWING(S), HOWEVER IT ADDITIONALLY CONTAINS FEATURE CONTROLS AND TOLERANCING REQUIRED FOR COMPATIBILITY WITH THE L.I.C. SOCKET DRAWN ON PAGE 1. THE CUSTOMER IS ADVISED TO REVIEW THIS DEVICE PACKAGE DRAWING THOROUGHLY BEFORE APPROVING TO ASSURE THAT MANUFACTURING REALITIES AGREE WITH THE DESIGN NEEDS.
- DEVICE REFERENCE FOR THIS PACKAGE IS MINDSPEED DWG # 45275 (MLF2), PROVIDED BY AMKOR/ANAM.

REVISION

symbol	description	initial/date

RECOMMENDED P.T.H. PATTERN (VIEW FROM THE TOP)

- CONTROLLING DIMENSIONS : INCH
- SCALE: 4/1



Loranger
International Corporation
Warren, PA 16365

Tolerance In Inches

.xx±.01 fract.
.xxx±.003 ang.±1/2°
.xxx±.0010

SCALE
NOTED

Orig. Release

NOTICE
Drawing is subject to change without notice and is L.I.C. proprietary in design and content. L.I.C. retains all patent rights and exclusive rights of use, manufacture and/or sale. Possession of this drawing does not convey permission to reproduce or manufacture article. Permission shall only be granted in writing and must be signed by an officer of L.I.C.

Equipment where used 73 LEAD .394[10.00] SQ
.0197[0.500] PITCH QFN

Part Description SOCKET ASSEMBLY

DRAFTED by/date
JFN/06-05-03

CHECKED by/date

ISSUE DATE

PAGE
NO. 2 OF 2

PROD.
NO.03714 731 X218A

DWG.
NO.03714 731 X218A